

Proficiency Programmes - Beer

Laboratories play an important role in the monitoring of Beer production at all stages of manufacturing, from fermentation through to labelling. Imagine the consequences if your results are not giving you accurate information to base your decisions upon, or caused you to mislabel a product.

Beer quality and in particular chemical and physical analysis is generally dependent on a brewer's own staff and, in some instances, that of independent testing laboratories. The reliability of these results can be difficult to assess in-house, and participation in an Inter-Laboratory Comparison Programme (ILCP) can alert you to potential problems, and assist you to gauge your performance against other laboratories.

PROFICIENCY TESTING

Inter-laboratory proficiency testing schemes (often referred to as "External Quality Assessments") provide an essential and effective means of assessing a laboratory's ability to competently perform tests or measurements. Global Proficiency's proficiency scheme enables laboratories to assess their performance against that of other participants, and satisfy the requirements of **ISO 17025** and **BRC** certification.

Global Proficiency Programmes provide good quality, homogeneous and stable samples within agreed schedules and with confidential follow-up. Technical advice is available as needed.

Benefits of participation

- Satisfy accreditation requirements
- Monitor tests as part of a Quality System
- Staff education and training
- Demonstrate competence
- Improve testing
- Validate methods and procedures
- Evaluate instrumentation
- Satisfy regulatory bodies
- Anonymous comparison with peers
- Identify problems and troubleshoot
- Build customer confidence

SCHEDULE & RESULTS SUBMISSION

Two Beer batches (6 bottles of each batch) will be despatched in May & November.

Results are returned to the organisers by online data entry at <http://virtual.global-proficiency.com/> or via fax.

TEST DETAILS

Laboratories may submit proficiency results for tests (from the following list) that they routinely carry out in-house. They are able to track the progress over time of individual technicians or multiple test methods at no extra cost, simply by assigning a consistent report number to each result submission.

Methods used to test samples are your own choice. If you have a reference method, please submit those results as your official laboratory report # 1 and secondary methods as subsequent report numbers.

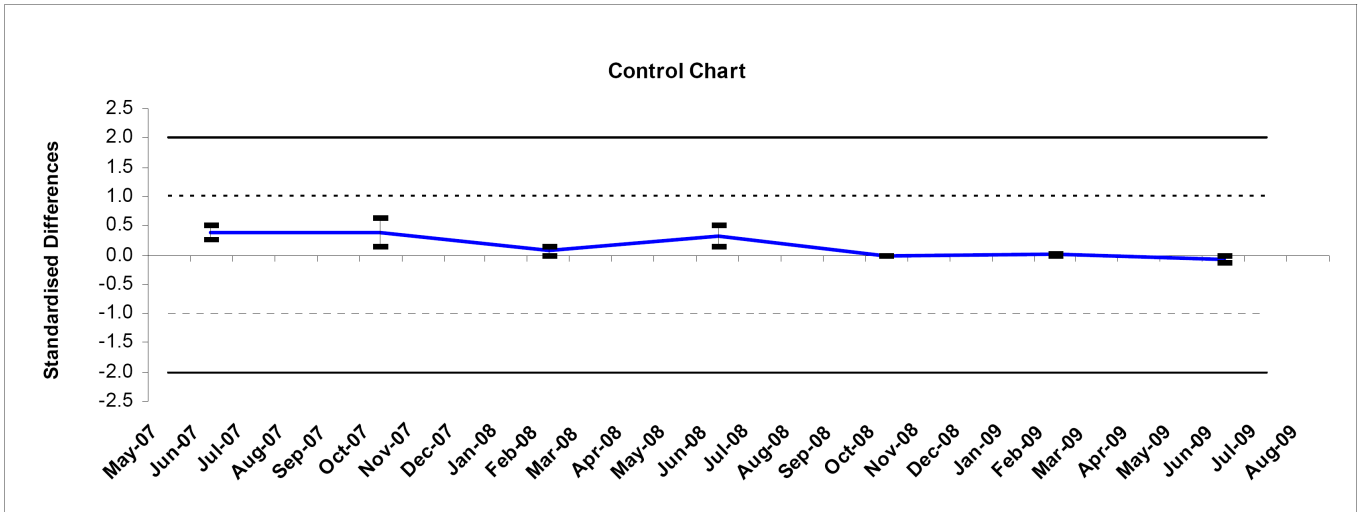
Available tests for Beer Proficiency:

- Alcoholic Strength (%v/v)
- Specific Gravity (g/mL @ 20°C)
- pH
- Sulfur Dioxide, total (mg/L)
- Carbon Dioxide (g/L)
- Haze (EBC at 20°C)
- Colour @ 430 nm (EBC)
- Bitterness (BU)
- Original Extract Calculation (°Plato)
- RDF - Real Degree of Fermentation (%)

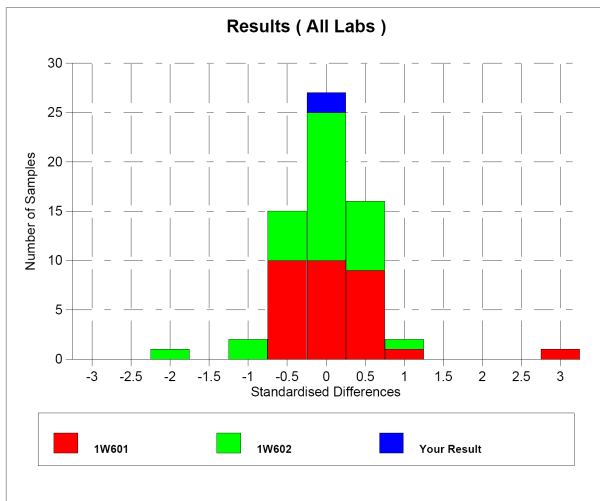
Further tests may be made available upon request, depending on the number of interested participants.



Additional samples are available to test as reference materials, or for follow-up and clearing alerts incurred in the round.



Example of Report graphs for Alcohol Testing in the Beverage Programme



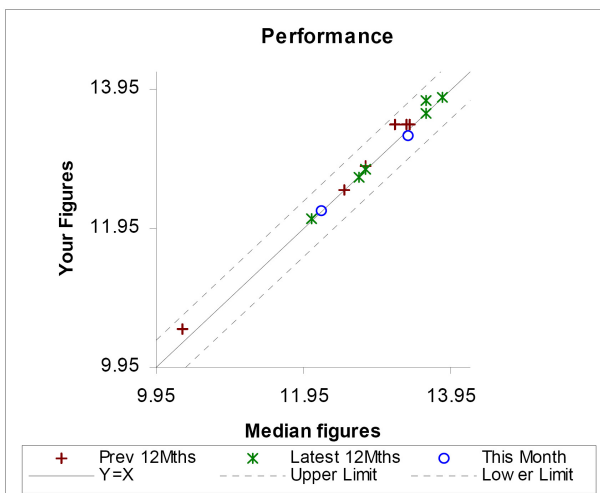
OFFICIAL RECOGNITION

Global Proficiency's programmes are:

- Endorsed by NZFSA (New Zealand Food Safety Authority), being the official provider of Inter-Laboratory Comparison Programmes for the meat and food testing industries.
- Acknowledged as appropriate by IANZ (International Accreditation New Zealand) for proficiency testing by accredited laboratories.
- Recognised by NATA (National Association of Testing Authorities of Australia) as a proficiency provider.
- Technical advisor to PTA (Proficiency Testing Australia)

PERFORMANCE EVALUATION

Within three weeks from the date the results are due, participants are Emailed a comprehensive report with a summary of their performance and ratings. The graphical report shows a histogram and scatter plot of results for the round, and a control chart summarising results for the previous 2 years. A rating is given as an interpretation of performance using set criteria for both bias and 'repeatability'. A score of Good, OK or Alert is issued for every test giving each customer prompt feedback on their accuracy and precision for each test performed.



Further information on the statistical analysis of proficiency results is available upon request in the Global Proficiency Scheme Protocol.

REGISTRATION AND CONTACT DETAILS

To register for the Global Proficiency Beer Proficiency Programme
or to obtain further details please contact:

Global Proficiency Ltd (New Zealand & International)
49 Mahana Road, PO Box 20474,
Te Rapa, Hamilton 3241, New Zealand
Ph: +64 (0)7 849 9990, Fax: +64 (0)7 849 4215
Email: Marion.Buckley-Smith@global-proficiency.com
Website: <http://www.global-proficiency.com>

Global Proficiency Pty Limited (Australia)
3-5 Lillee Crescent,
Tullamarine, Victoria, 3043, Australia
Ph: 03 8318 9014, Fax: 03 8318 9001
Email: Sarah.Giannoulidis@global-proficiency.com
Website: <http://www.global-proficiency.com>

Proficiency Programmes - Spirits

Laboratories play an important role in the monitoring of spirits production at all stages of manufacturing, from fermentation and distillation through to labelling. Imagine the consequences if your results are not giving you accurate information to base your decisions upon, or caused you to mislabel a product.

Spirit quality and in particular chemical and physical analysis is generally dependent on a distilleries own staff and, in some instances, that of independent testing laboratories. The reliability of these results can be difficult to assess in-house, and participation in an Inter-Laboratory Comparison Programme (ILCP) can alert you to potential problems, and assist you to gauge your performance against other laboratories.

PROFICIENCY TESTING

Inter-laboratory proficiency testing schemes (often referred to as “External Quality Assessments”) provide an essential and effective means of assessing a laboratory’s ability to competently perform tests or measurements. Global Proficiency’s proficiency scheme enables laboratories to assess their performance against that of other participants, and satisfy the requirements of **ISO 17025** and **BRC** certification.

Global Proficiency Programmes provide good quality, homogeneous and stable samples within agreed schedules and with confidential follow-up. Technical advice is available as needed.

Benefits of participation

- Satisfy accreditation requirements
- Monitor tests as part of a Quality System
- Staff education and training
- Demonstrate competence
- Improve testing
- Validate methods and procedures
- Evaluate instrumentation
- Satisfy regulatory bodies
- Anonymous comparison with peers
- Identify problems and troubleshoot
- Build customer confidence

SCHEDULE & RESULTS SUBMISSION

Three spirits samples (dark, white & liqueur) will be despatched in April, August & December. Results are returned to the organisers by online data entry at <http://virtual.global-proficiency.com/> or fax.

TEST DETAILS

Laboratories may submit proficiency results for tests (from the following list) that they routinely carry out in-house. They are able to track the progress over time of individual technicians or multiple test methods at no extra cost, simply by assigning a consistent report number to each result submission.

Methods used to test samples are your own choice. If you have a reference method, please submit those results as your official laboratory report # 1 and secondary methods as subsequent report numbers.

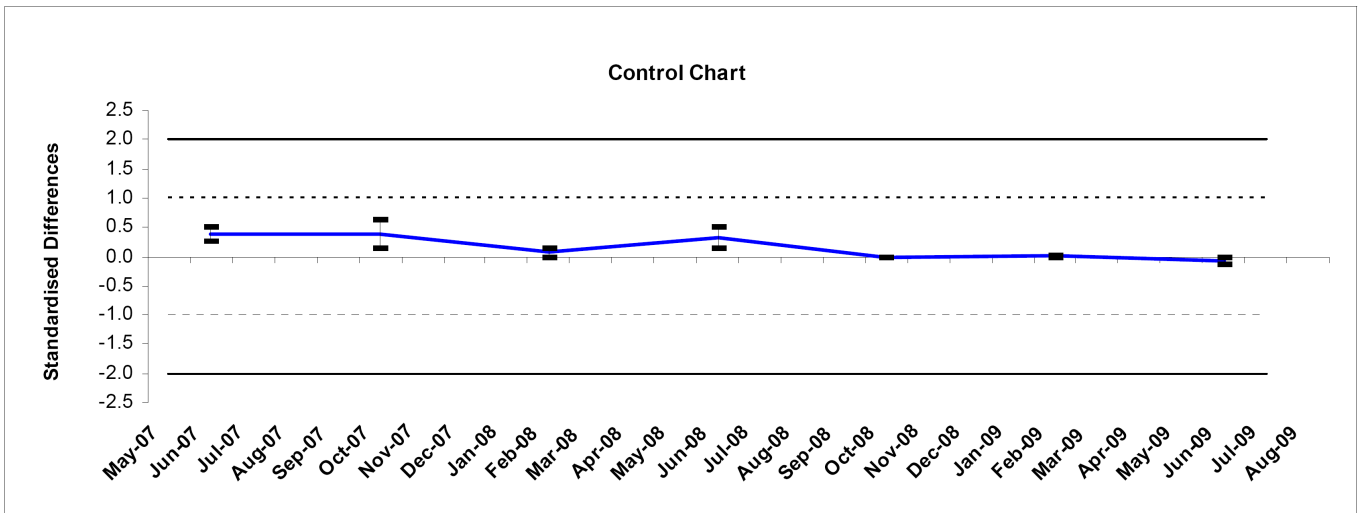
Available tests for Spirits Proficiency:

- Alcohol (Real)
- Alcohol (Apparent)
- Specific Gravity

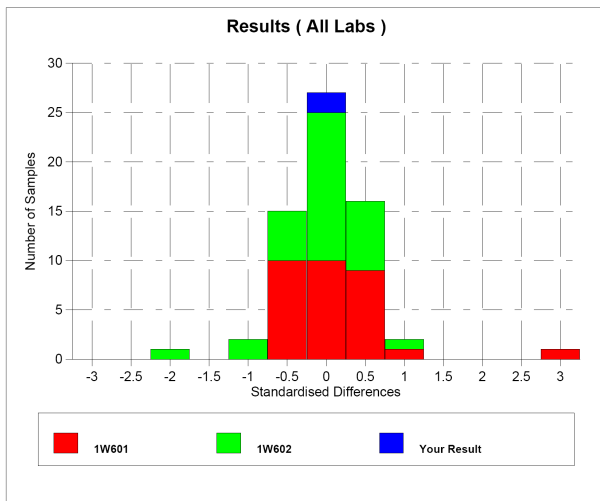
Further tests may be made available upon request, depending on the number of interested participants.



Additional samples will be available to test as reference materials, or for clearing alerts incurred in the round.



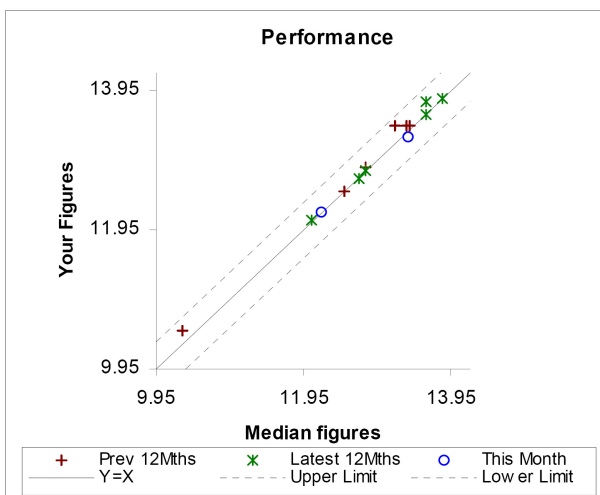
Example of Report graphs for Alcohol Testing in the Beverage Programme



OFFICIAL RECOGNITION

Global Proficiency's programmes are:

- Endorsed by NZFSA (New Zealand Food Safety Authority), being the official provider of Inter-Laboratory Comparison Programmes for the meat, water and food testing industries.
- Acknowledged as appropriate by IANZ (International Accreditation New Zealand) for proficiency testing by accredited laboratories.
- Recognised by NATA (National Association of Testing Authorities of Australia) as a proficiency provider.
- Technical advisor to PTA (Proficiency Testing Australia)



PERFORMANCE EVALUATION

Within three weeks from the date the results are due, participants are Emailed a comprehensive report with a summary of their performance and ratings. The graphical report shows a histogram and scatter plot of results for the round, and a control chart summarising results for the previous 2 years. A rating is given as an interpretation of performance using set criteria for both bias and 'repeatability'. A score of Good, OK or Alert is issued for every test giving each customer prompt feedback on their accuracy and precision for each test performed.

Further information on the statistical analysis of proficiency results is available upon request in the Global Proficiency Scheme Protocol.

REGISTRATION AND CONTACT DETAILS

To register for the Global Proficiency Spirits Proficiency Programme or to obtain further details please contact:

Global Proficiency Ltd (New Zealand & International)

49 Mahana Road, PO Box 20474,
Te Rapa, Hamilton 3241, New Zealand
Ph: +64 (0)7 849 9990, Fax: +64 (0)7 849 4215
Email: Marion.Buckley-Smith@global-proficiency.com
Website: <http://www.global-proficiency.com>

Global Proficiency Pty Limited (Australia)

3-5 Lillie Crescent,
Tullamarine, Victoria, 3043, Australia
Ph: 03 8318 9014, Fax: 03 8318 9001
Email: Sarah.Giannoulidis@global-proficiency.com
Website: <http://www.global-proficiency.com>

Proficiency Programmes: Carbonated Drinks

Laboratories play an important role in the monitoring of Carbonated Drinks production at all stages of manufacturing, from processing through to labelling. Imagine the consequences if your results are not giving you accurate information to base your decisions upon, or caused you to mislabel a product.

Carbonated Drinks quality and in particular chemical and physical analysis is generally dependent on a brewers own staff and, in some instances, that of independent testing laboratories. The reliability of these results can be difficult to assess in-house, and participation in an Inter-Laboratory Comparison Programme (ILCP) can alert you to potential problems, and assist you to gauge your performance against other laboratories.

PROFICIENCY TESTING

Inter-laboratory proficiency testing schemes (often referred to as "External Quality Assessments") provide an essential and effective means of assessing a laboratory's ability to competently perform tests or measurements. Global Proficiency's proficiency scheme enables laboratories to assess their performance against that of other participants, and satisfy the requirements of **ISO 17025** and **BRC** certification.

Global Proficiency's Programmes provide good quality, homogeneous and stable samples within agreed schedules and with confidential follow-up. Technical advice is available as needed.

Benefits of participation

- Satisfy accreditation requirements
- Monitor tests as part of a Quality System
- Staff education and training
- Demonstrate competence
- Improve testing
- Validate methods and procedures
- Evaluate instrumentation
- Satisfy regulatory bodies
- Anonymous comparison with peers
- Identify problems and troubleshoot
- Build customer confidence

SCHEDULE & RESULTS SUBMISSION

Two non-alcoholic and two alcoholic carbonated drinks batches (2 bottles of each batch) will be despatched in May & November.

Results are returned to the organisers by online data entry at <http://www.global-proficiency.com/on-line-data-entry.cfm> or via fax.

TEST DETAILS

Laboratories may submit proficiency results for tests (from the following list) that they routinely carry out in-house. They are able to track the progress over time of individual technicians or multiple test methods at no extra cost, simply by assigning a consistent report number to each result submission.

Methods used to test samples are your own choice. If you have a reference method, please submit those results as your official laboratory report # 1 and secondary methods as subsequent report numbers.

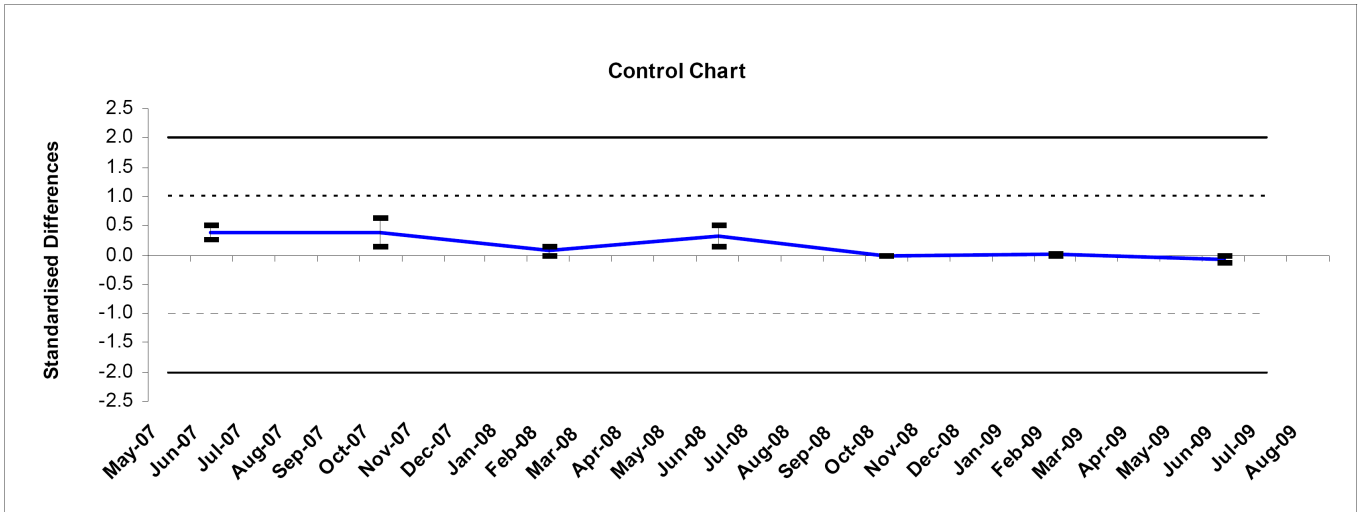
Available tests for Carbonated Drinks Proficiency:

- Brix (^oBrix @ 20°C)
- Total Sugar (g/L)
- Sucrose (%v/v)
- Glucose + Fructose (g/L)
- pH
- Carbonation (CO₂ g/L)
- Acidity (%v/v citric acid)
- Actual Alcoholic Strength (%v/v)
- Sorbic Acid (mg/L)
- Benzoic Acid (mg/L)

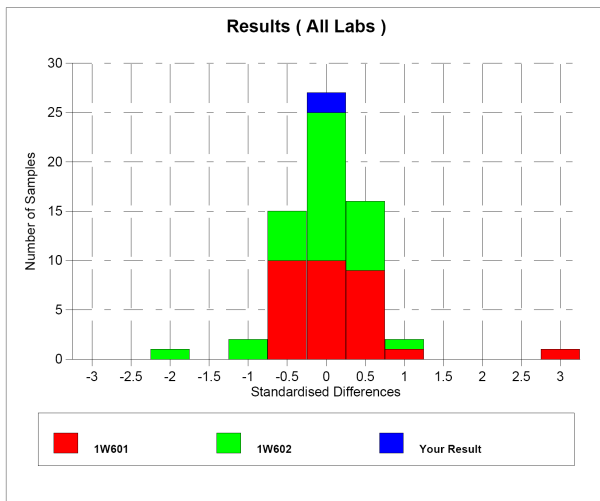
Further tests may be made available upon request, depending on the number of interested participants.



Additional samples are available to test as reference materials, or for follow-up and clearing alerts incurred in the round.



Example of Report graphs for Alcohol Testing in the Beverage Programme



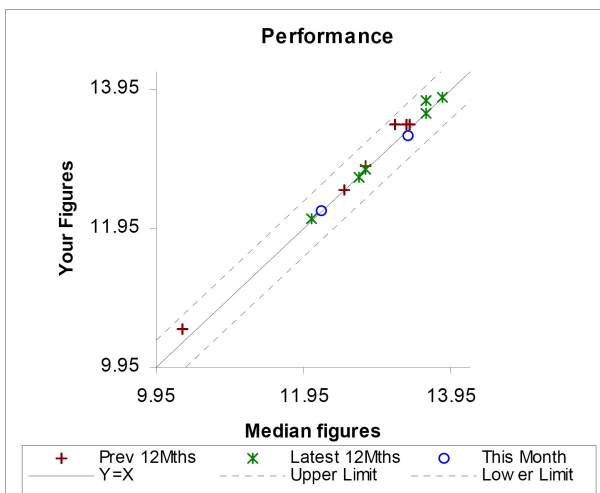
OFFICIAL RECOGNITION

Global Proficiency's Programmes are:

- Endorsed by NZFSA (New Zealand Food Safety Authority), being the official provider of Inter-Laboratory Comparison Programmes for the meat and food testing industries.
- Acknowledged as appropriate by IANZ (International Accreditation New Zealand) for proficiency testing by accredited laboratories.
- Recognised by NATA (National Association of Testing Authorities of Australia) as a proficiency provider.
- Technical advisor to PTA (Proficiency Testing Australia)

PERFORMANCE EVALUATION

Within three weeks from the date the results are due, participants are Emailed a comprehensive report with a summary of their performance and ratings. The graphical report shows a histogram and scatter plot of results for the round, and a control chart summarising results for the previous 2 years. A rating is given as an interpretation of performance using set criteria for both bias and 'repeatability'. A score of Good, OK or Alert is issued for every test giving each customer prompt feedback on their accuracy and precision for each test performed.



Further information on the statistical analysis of proficiency results is available upon request in the Global Proficiency Scheme Protocol.

REGISTRATION AND CONTACT DETAILS

To register for the Global Proficiency Carbonated Drinks Proficiency Programme or to obtain further details please contact:

Global Proficiency Ltd (New Zealand & International)

49 Mahana Road, PO Box 20 474,
Te Rapa, Hamilton 3241, New Zealand
Ph: +64 (0)7 849 9990, Fax: +64 (0)7 849 4215
Email: Sharon.Taylor@global-proficiency.com
Website: <http://www.global-proficiency.com>

Global Proficiency Pty Ltd (Australia)

3-5 Lillee Crescent,
Tullamarine, Victoria, 3043, Australia
Ph: +61 (0)3 8318 9014, Fax: +61 (0)3 8318 9001
Email: Sarah.Giannoulidis@global-proficiency.com
Website: <http://www.global-proficiency.com>